

A lottery where you can choose your own numbers. Which ones will give you your big chance?



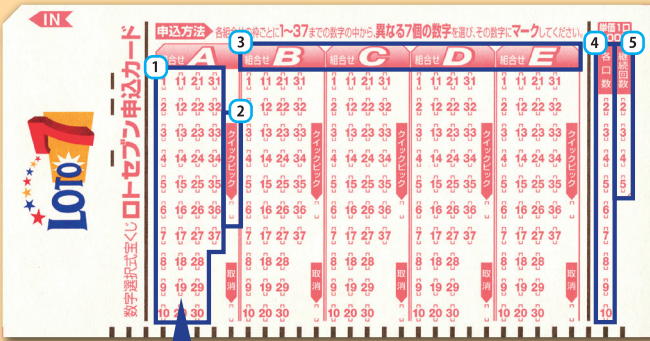
7 numbers can give you massive winnings!



1st place winner:
6 hundred million yen
(theoretical value)

If it carries over
1st place winner:
1 billion yen

● Drawings every Friday ● 300 yen per ticket



STEP 1

Choose and mark 7 numbers from box A!

Choose and mark 7 numbers of your choice from among the 37 numbers!

Carry-overs possible

STEP 2

If you can't decide on numbers, use Quick-Pick!

If you mark here, a computer will choose your numbers for you.

STEP 4

If you want to buy 2 or more tickets with the same numbers, mark them on the ticket (up to a maximum of 10 tickets).



STEP 3

If you want to choose more, fill in box B through E.

STEP 5

If you wish to choose the same numbers for future drawings, mark the number of times including this drawing (up to a maximum of 5 times).

Win jackpot value for a carry-over.

The highest jackpot when there is no winner, and the excess amount when the winning amount per ticket exceeds the maximum amount will be carried over into the total amount for the next jackpot drawing, which is called carrying over.

If you wish to use Quick-Pick, there is no need to mark.
Just tell the teller you wish to use "Quick-Pick" and you can purchase tickets.

Winning Amounts / Winning Conditions

7 main numbers and 2 bonus numbers* are chosen for the drawing.

*Bonus numbers are only used to determine 2nd and 6th place winnings.

Place	Winning amount (theoretical)	Winning conditions	Odds of winning
1st	600,000,000 yen	All 7 main numbers are drawn.	1 / 10,295,472
2nd	About 7,300,000 yen	6 main numbers and 1 bonus number are drawn.	About 1 / 735,391
3rd	About 730,000 yen	6 main numbers are drawn.	About 1 / 52,528
4th	9,100 yen	5 main numbers are drawn.	About 1 / 1,127
5th	1,400 yen	4 main numbers are drawn.	About 1 / 72
6th	1,000 yen	3 main numbers and 1 or 2 bonus numbers are drawn.	About 1 / 42

※ Duplicate wins between different winning places will not be approved, and the highest winning place will take precedence.
※ Winning amounts will vary each time depending on sales amounts and the number of winning tickets sold.

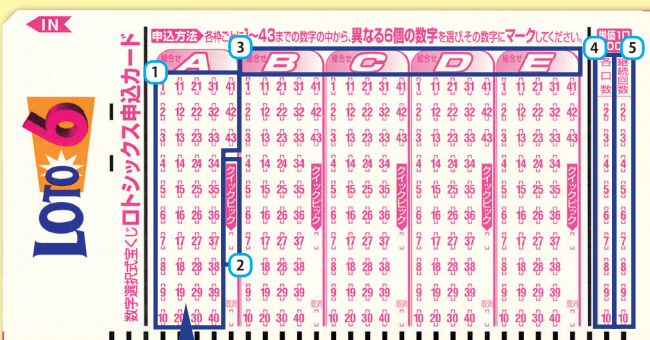
Select 6 numbers to become a billionaire!



1st place winner:
2 hundred million yen
(theoretical value)

If it carries over
1st place winner:
6 hundred million yen

● Drawings every Monday and Thursday ● 200 yen per ticket



STEP 1

Choose and mark 6 numbers from box A!

Choose and mark 6 numbers of your choice from among the 43 numbers!

Carry-overs possible

STEP 2

If you can't decide on numbers, use Quick-Pick!

If you mark here, a computer will choose your numbers for you.

STEP 4

If you want to buy 2 or more tickets with the same numbers, mark them on the ticket (up to a maximum of 10 tickets).



STEP 3

If you want to choose more, fill in box B through E.

STEP 5

If you wish to choose the same numbers for future drawings, mark the number of times including this drawing (up to a maximum of 10 times).

Win jackpot value for a carry-over.

The highest jackpot when there is no winner, and the excess amount when the winning amount per ticket exceeds the maximum amount will be carried over into the total amount for the next jackpot drawing, which is called carrying over.

If you wish to use Quick-Pick, there is no need to mark.
Just tell the teller you wish to use "Quick-Pick" and you can purchase tickets.

Winning Amounts / Winning Conditions

6 main numbers and 1 bonus number* are chosen for the drawing.

*Bonus number is only used to determine 2nd place winning.

Place	Winning amount (theoretical)	Winning conditions	Odds of winning
1st	200,000,000 yen	All 6 main numbers are drawn.	1 / 6,096,454
2nd	About 10,000,000 yen	5 main numbers and 1 bonus number are drawn.	About 1 / 1,016,076
3rd	300,000 yen	5 main numbers are drawn.	About 1 / 28,224
4th	6,800 yen	4 main numbers are drawn.	About 1 / 610
5th (generally fixed)	1,000 yen	3 main numbers are drawn.	About 1 / 39

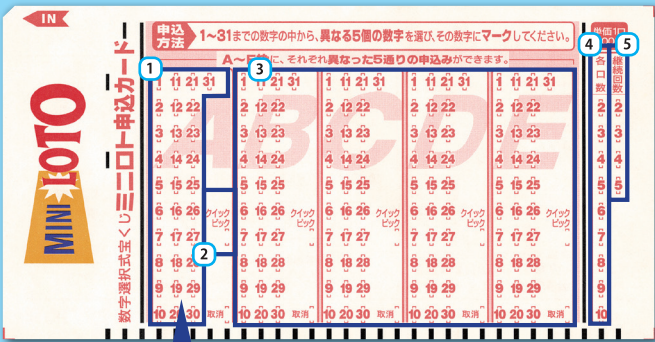
※ Duplicate wins between different winning places will not be approved, and the highest winning place will take precedence.
※ Winning amounts will vary each time depending on sales amounts and the number of winning tickets sold.

Multiply the odds! High winnings with 5 numbers!



1st place (theoretical value)
About 10 million yen

● Drawings every Tuesday ● 200 yen per ticket



STEP 1

Choose and mark 5 numbers from box A!

Choose and mark 5 numbers of your choice from among the 31 numbers!

STEP 2

If you can't decide on numbers, use Quick-Pick!

If you mark here, a computer will choose your numbers for you.

STEP 4

If you want to buy 2 or more tickets with the same numbers, mark them on the ticket (up to a maximum of 10 tickets).

STEP 3

If you want to choose more, fill in box B through E.

STEP 5

If you wish to choose the same numbers for future drawings, mark the number of times including this drawing (up to a maximum of 5 times).

If you wish to use Quick-Pick, there is no need to mark.
Just tell the teller you wish to use "Quick-Pick" and you can purchase tickets.

Winning Amounts / Winning Conditions

5 main numbers and 1 bonus number* are chosen for the drawing.

*Bonus number is only used to determine 2nd place winning.

Place	Winning amount (theoretical)	Winning conditions	Odds of winning
1st	About 10,000,000 yen	All 5 main numbers are drawn.	1/169,911
2nd	About 150,000 yen	4 main numbers and 1 bonus number are drawn.	About 1/33,982
3rd	10,000 yen	4 main numbers are drawn.	About 1/1,359
4th	1,000 yen	3 main numbers are drawn.	About 1/52

※Duplicate wins between different winning places will not be approved, and the highest winning place will take precedence.
※Winning amounts will vary each time depending on sales amounts and the number of winning tickets sold.

Win by aligning vertically, horizontally, or diagonally!



1st place (theoretical value)
About 5.55 million yen

● Drawings every Wednesday ● 200 yen per ticket



STEP 1

Choose and mark 1 number from the 5 numbers in each of the boxes!

For the 8 boxes excluding the center (free) box, choose 1 number from among the 5 numbers in each box for a total of 8 numbers to win.

Play as bingo!

STEP 2

If you can't decide on numbers, use Quick-Pick!

If you mark here, a computer will choose your numbers for you.

STEP 4

If you want to buy 2 or more tickets with the same numbers, mark them on the ticket (up to a maximum of 10 tickets).

STEP 3

If you want to choose more, fill in box B.

STEP 5

If you wish to choose the same numbers for future drawings, mark the number of times including this drawing (up to a maximum of 5 times).

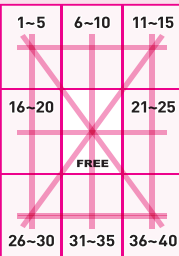


If you wish to use Quick-Pick, there is no need to mark.
Just tell the teller you wish to use "Quick-Pick" and you can purchase tickets.

Winning Amounts / Winning Conditions

One number will be determined in drawings from each of the boxes.
The amount won will be determined by the number of lines formed.

※Duplicate wins between different winning places will not be approved, and the highest winning place will take precedence.
※Winning amounts will vary each time depending on sales amounts and the number of winning tickets sold.



Place	Winning amount (theoretical)	Winning conditions	Odds of winning
1st	About 5,550,000 yen	8 lines formed	1/390,625
2nd	300,000 yen	6 lines formed	About 1/24,414
3rd	45,000 yen	5 lines formed	About 1/8,138
4th	18,200 yen	4 lines formed	About 1/2,035
5th	2,500 yen	3 lines formed	About 1/313
6th	700 yen	2 lines formed	About 1/59
7th (generally fixed)	200 yen	1 line formed	About 1/7

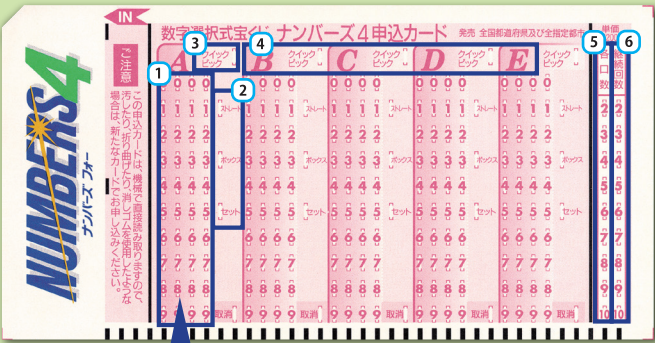
Select a 4-digit number of your choice to win!



Straight (theoretical amount 900,000 yen)
About 1,000,000 yen

● Drawings every Monday-Friday ● 200 yen per ticket

Select a 4-digit number



Drawings every Monday through Friday



STEP 1

Select and mark a number from each digit in box A!

Numbers are 0-9 for each digit. Select 1 number from each digit and mark a total of 4 numbers

STEP 2

Select your application type

Select 1 application type from the Application types.
From the top, "Straight," "Box," and "Set"

STEP 3

If you can't decide on numbers, use Quick-Pick!

If you mark here, a computer will choose your numbers for you.

STEP 4

If you want to choose more, fill in box B through E.

STEP 5

If you want to buy 2 or more tickets with the same numbers, mark them on the ticket (up to a maximum of 10 tickets).

STEP 6

If you wish to choose the same numbers for future drawings, mark the number of times including this drawing (up to a maximum of 10 times).

If you wish to use Quick-Pick, there is no need to mark. Just tell the teller you wish to use "Quick-Pick" and you can purchase tickets.

Winning Amounts / Winning Conditions

A 4-digit number is chosen for the drawing.

Application type	Winning amount (theoretical)	Winning conditions	Odds of winning
Straight	900,000 yen	The 4 digits and their order match	1 / 10,000
Box	37,500 yen	The 4 digits match (regardless of the order).	About 1 / 417
Set	Straight 468,700 yen Box 18,700 yen	Applying for straight and box on 1 ticket. Either will result in a win.	About 1 / 10,000 About 1 / 435

※For box and set types you cannot apply for the same 4 numbers such as "1111".

※Winning amounts will vary each time depending on sales amounts and the number of winning tickets sold.

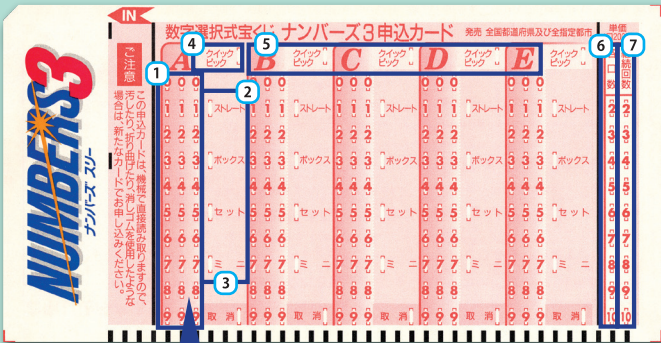
Select a 3-digit number for a solid challenge!



Straight (theoretical amount 90,000 yen)
About 100,000 yen

● Drawings every Monday-Friday ● 200 yen per ticket

Drawings every Monday through Friday



Select 3 digits!



STEP 1

Select and mark a number from each digit in box A!

Numbers are 0-9 for each digit. Select 1 number from each digit and mark a total of 3 numbers

STEP 2

Select your application type

Select 1 application type from the Application types.
From the top, "Straight," "Box," "Set," and "Mini"

STEP 3

If you are applying for the Mini, choose and mark only the last 2 digits (leave the left edge blank)

STEP 4

If you can't decide on numbers, use Quick-Pick!

If you mark here, a computer will choose your numbers for you.

STEP 5

If you want to choose more, fill in box B through E.

STEP 6

If you want to buy 2 or more tickets with the same numbers, mark them on the ticket (up to a maximum of 10 tickets).

STEP 7

If you wish to choose the same numbers for future drawings, mark the number of times including this drawing (up to a maximum of 10 times).

If you wish to use Quick-Pick, there is no need to mark. Just tell the teller you wish to use "Quick-Pick" and you can purchase tickets.

Winning Amounts / Winning Conditions

A 3-digit number is chosen for the drawing.

Application type	Winning amount (theoretical)	Winning conditions	Odds of winning
Straight	90,000 yen	The 3 digits and their order match	1 / 1,000
Box	15,000 yen	The 3 digits match (regardless of the order).	About 1 / 167
Set	Straight 52,500 yen Box 7,500 yen	Applying for straight and box on 1 ticket. Either will result in a win.	1 / 1,000 1 / 200
Mini	9,000 yen	Match the last 2 digits of the number and their order.	1 / 100

※For box and set types you cannot apply for the same 3 numbers such as "111".

※Winning amounts will vary each time depending on sales amounts and the number of winning tickets sold.



Scratch lottery guide

Scratch and know whether you have won on the spot!
Have fun playing and take your chance.



1st place winning amount
for Scratch lottery is

50,000 yen to 100 million yen

Scratch!
Scratch!



Many different types of scratch tickets are sold simultaneously.

There are tickets with high winning amounts,
and tickets with lots of ways to win.

You win if the images and lines will match certain patterns when you scratch.
There are 3 types costing 100, 200, and 300 yen per ticket, and
they can be purchased at any time at the lottery sales shops.

Example

Scratch everything within the red border with a coin

Winner

Simple!
Fast!



Illustration of the ticket

Image before scratching



Illustration of the ticket

Image after scratching

Please
do not
scratch
here

How to purchase

- 1 Please scratch everything within the red border (the red lines).
- 2 To know whether you have won or not, please give it to the sales teller and ask, "ĀTĀRI-DESŪKĀ?" (The winning patterns sometimes change, so the staff will see whether you have won.)
- 3 If you are a winner, the staff should reply "ŌMEDETŌ".
If not, they should reply "ZAN-NEN" (Sales staff are not skilled at foreign languages so they will reply in simple Japanese.)